

20' General Purpose



Overall dimensions (m)	6.058 x 2.438 x 2.591
Interior Dimensions	5.898 x 2.352 x 2.393
Door Dimensions/Side Openings	2.340 x 2.28 (w x h)
Capacity	33.2 m ³
Tare Weight	2,180 kg
Gross Weight	30,480 kg (max)
Payload (kg)	28,300 kg (max)

20' Folding Flatrack



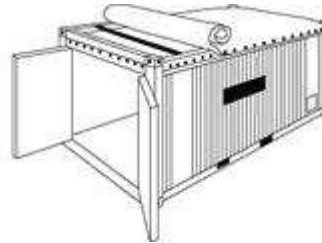
Overall dimensions (m)	6.068 x 2.438 x 2.591
Interior Dimensions	6.038 x 2.210
Side Openings L x H (m)	5.612 x 2.227
Capacity	31.9
Tare Weight	2740 kg
Gross Weight	34,000 kg
Payload (kg)	31,260

20' Integral Reefer



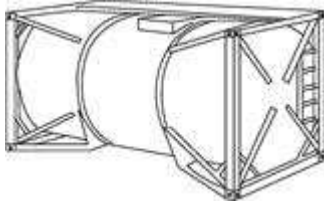
Overall dimensions (m)	6.1 x 2.4 x 2.6
Interior Dimensions	5.45 x 2.26 x 2.247
Door Dimensions/Side Openings	2.26 x 2.247 (w x h)
Capacity	27.7 m ³
Tare Weight	3,460 kg
Gross Weight	24,000 kg

20' Opentop



Overall dimensions (m)	6.1 x 2.4 x 2.6
Interior Dimensions	5.89 x 2.345 x 2.34
Door Dimensions/Side Openings	2.335 x 2.26 (w x h)
Capacity	32.4 m ³
Tare Weight	2,093 - 2,513 kg
Gross Weight	2,400 - 30,480 kg
Roof Aperture L x B (m)	5.712 x 2.175

20' Tanktainer



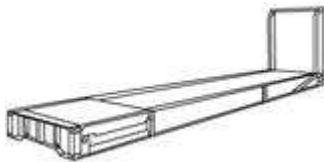
Overall dimensions (m)	6.1 x 2.4 x 2.6
Tare Weight	3,949 - 4,650 kg
Gross Weight	30,480 kg
Total Water Capacity (litres)	24,000

40' General Purpose



Overall dimensions (m)	12.192 x 2.438 x 2.591
Interior Dimensions	12.032 x 2.352 x 2.393
Door Dimensions (m)	2.340 x 2.280 (w x h)
Capacity	67.7 m ³
Tare Weight	3,690 kg
Gross Weight	30,480 kg (max)
Payload (kg)	26,790 kg (max)

40' Flatrack



Overall dimensions (m)	12.202 x 2.438 x 2.591
Interior Dimensions	12.180 x 2.380
Side Openings L x H (m)	11.776 x 2.230
Capacity	58.6 m ³
Tare Weight	4,900 kg
Gross Weight	45,000 kg

40' Highcube



Overall dimensions (m)	12.192 x 2.438 x 2.896
Interior Dimensions	12.032 x 2.352 x 2.698
Door Dimensions (m)	2.34 X 2.585 (w x h)
Capacity	76.4 m ³
Tare Weight	3,840 kg
Gross Weight	30,480 kg (max)
Payload (kg)	26,640 kg (max)



www.atlasforwarding.com.au

40' Opentop



Overall dimensions (m)	12.2 x 2.4 x 2.6
Interior Dimensions	12.025 x 2.247 x 2.305
Door Dimensions (m)	2.235 x 2.2
Capacity	63.47 m ³
Tare Weight	3,949 - 4,650 kg
Gross Weight	30,480 kg
Roof Aperture L x B (m)	11.832 x 2.150